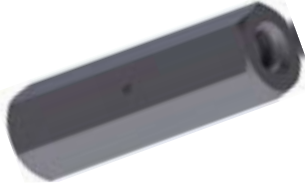


Nuts and Couplers

Couplers

We offer different couplers for the force-fit connection of two threadbars. A stop pin in the middle of the coupler ensures an equal screwing-in length of both bars. Two fixed threadbars can be connected and tensioned using a turnbuckle splice.

Hex Coupler



Article No.	Bar Ø [mm]	Length [mm]	Hex [mm]	Weight [kg/pc.]
15 F 2002/90 ¹⁾	15	90	30	0.40
15 F 3005	15	105	30	0.45
20 F 3005	20	130	36	0.74
26 E 3005/120 ²⁾	26.5	120	46	1.10
26 E 3005/150	26.5	150	46	1.38

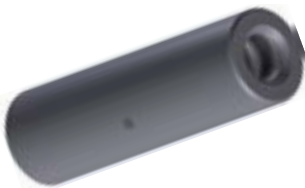
1) Working load of 15 F 2002/90: 80kN

2) Working load of 26 E 3005/120: 200kN

Screwing-in length is guaranteed by stop pin

All Couplers are also available galvanized > Article No. .../V
(example: 15 F 3005/V)

Round Coupler

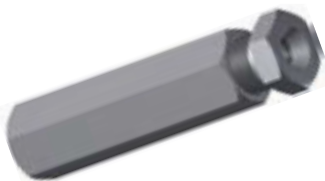


Article No.	Bar Ø [mm]	Length [mm]	Diameter [mm]	Weight [kg/pc.]
15 F 3003	15	105	30	0.40
20 F 3003	20	130	40	0.85
26 E 3003	26.5	150	50	1.50

Screwing-in length is guaranteed by stop pin

All Couplers are also available galvanized > Article No. .../V
(example: 15 F 3003/V)

Turnbuckle Splice



Article No.	Bar Ø [mm]	Length [mm]	Hex [mm]	Weight [kg/pc.]
15 F 3013/14	15	185	41	1.40
20 F 3013/14	20	190	46	1.90
26 E 3013/14	26.5	250	60	3.80

For screwing and tensioning with two fixed bar ends

15 F 3013/14: Tensile force of 40kN if a torque of 0.5kNm is applied

20 F 3013/14: Tensile force of 70kN if a torque of 0.75kNm is applied

26 E 3013/14: Tensile force of 100kN if a torque of 1.0kNm is applied

Unless noted, working loads of Nuts and Couplers are as follows:
12 F: 30kN; 15 F: 90kN; 20 F: 150kN; 26 E: 250kN